

CLIMATE CONTROL

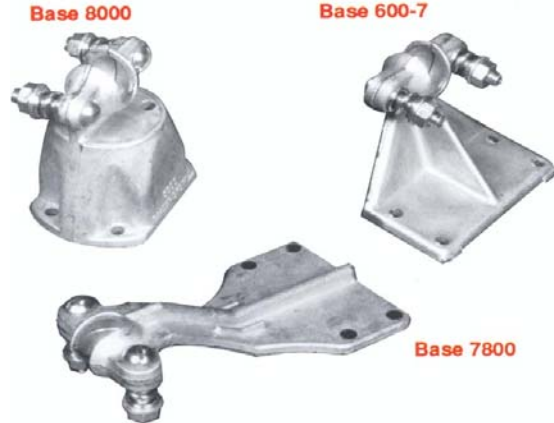
DRIVER FANS



SM3012
UNIVERSAL
12V DRIVERS FAN
BASE MOUNT W/SWITCH
CRC-3061
UNIVERSAL
12V DRIVERS FAN
HEADER MOUNT



BAADER BROWN
900-092-000 BASE MOUNT
900-052-000 HEADER MOUNT
900-072-000 BASE MOUNT



900-092-000 DRIVER FAN W/BASE 600-7
16-100-280 BASE REPLACEMENT ONLY
900-052-000 DRIVER FAN W/BASE 7800
16-100-240 BASE REPLACEMENT ONLY
900-072-000 DRIVER FAN W/BASE 8000
16-100-301 BASE REPLACEMENT ONLY

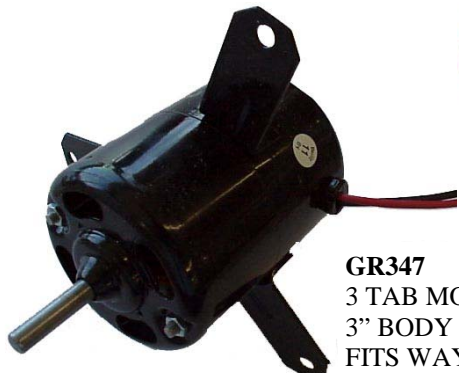
HEATER MOTORS



GR157
UNIVERSAL HEATER MOTOR
3" BODY, 5/16" SHAFT 2 SPEED



GR314 CW ROTATION
GR315 CCW ROTATION
3" BODY, 5/16" SHAFT 2 SPEED



GR347
3 TAB MOTOR
3" BODY 5/16" SHAFT
FITS WAYNE BUSES



GR037 CW ROTATION
GR055 CCW ROTATION
3" BODY, 1/4" SHAFT 2 SPEED

**IF YOUR LOOKING FOR
HEATER/DEFROSTER MOTORS
GIVE US A CALL WE STOCK MO-
TORS FOR ALL MAKES OF
SCHOOL BUSES**

CLIMATE CONTROL

FAN BLADES AND BLOWER WHEELS



9-0721 CARPENTER
BLOWER WHEEL



9-0714 CARPENTER
9" FAN BLADE



9-0715 CARPENTER
10" FAN BLADE



1567270 BLUE BIRD
BLOWER WHEEL 2 7/8" X 5 1/4"
1567288 BLUE BIRD
BLOWER WHEEL 2 7/8" X 4 3/4"



2004307 BLUE BIRD
10" FAN BLADE CCW



62070123
7" PLASTIC FAN BLADE



62100123
10" PLASTIC FAN BLADE



26026374 THOMAS
THOMAS 5 1/2" X 4 1/2"



427484008
WARD AMTRAN
BLOWER WHEEL

IF YOUR PART IS NOT LISTED PLEASE CALL 1-800-460-2877

CLIMATE CONTROL

HEATER CORES

BLUE BIRD

YEAR	HEATER DESCRIPTION	MODEL	BTU'S	OEM NO.	ONE STOP PART NO.
94-69	Left Front (Driver's Side)	90	90M	2129732	1000
82-71	Left Front/Defroster	Piggy back	95M	274498	1000
93-86; 83-72	Right Front (Step Well)	Dual Fan 50	50M	2160562	1004
93-86; 83-72	Rear	Single Fan 50	50M	2160562	1004
83-82	Rear (KY)	Dual Fan 80	80M	2128007	1069
93-86; 83-72	Rear	Dual Fan 80	80M	2157592	1074
95-96	Left Front (Driver's Side)		90M		1125

CARPENTER

YEAR	HEATER DESCRIPTION	MODEL	BTU'S	OEM NO.	ONE STOP PART NO.
87-73	Left Front	B440-2004		9-0730	1094
87-73	Left Front	B440-2012		9-0730	1094
87-73	Left Front	B440-2013		9-0730	1094
87-73	Left Front	B440-2014		9-0730	1094
87-73	Left Front	B440-2015		9-0730	1094
87-85	Left Front	4400-70082K		9-0742	1012
87	Left Front	4400-70070		9-0742	1012
87	Left Front	4400-70072		9-0742	1012
87-73	Left Front	4400-2005		9-0730	1094
87-73	Left Front	4000-2006		9-0730	1094
87-73	Left Front	4000-2007		9-0730	1094
87	Front	4500-70084	83M	9-0737	1038
87	Left Front	B450-2004	83M	9-0737	1038
87	Left Front	B450-2005	83M	9-0737	1038
87	Left Front	B441-78		9-0732	1037
87	Left Front	B441-82		9-0732	1037
87	Left Front	B450-2003		9-0732	1037
87	Left Front	B470-2000		9-0732	1037
91	Left Front Outside Access	108221	91M	210917	1031
91-89	Left Front Outside Access	108232	98.5M	210018	1034
97-91	Driver (FC)	65060000	32M	9-0945	1082
94-91	Left Front Conv.	66580020	93M	9-0946	1083
94-91	Left Front Conv.	66580025	101M	9-0952	1083
95-94	Left Front Conv.	66580030	93M	9-0977	1083
95-94	Left Front, High Performance	66580035	101M	9-0978	1083
95-94	Left Front, 1 Fan & Blower	66580031	85M	9-0979	1083
96	Left Front, Conv.	66580000	93M	90989	1083
96	Left Front, Conv. 1 Fan	66580001	85M	98390	1083
96	Left Front, Conv.	66580005	101M	98391	1083
96	Right Front, Conv.	64900020	51M	9837	1019
96	Left Front Conv. 1 Fan	64950020	33M	98388	1020

CLIMATE CONTROL

HEATER CORES

CARPENTER (CONTINUED)

YEAR	HEATER DESCRIPTION	MODEL	BTU'S	OEM NO.	ONE STOP PART NO.
96-95	Right Front (FC)	72650001	82M	95379	1075
87-82	Right Front	B186-80; Dual	60M	9-0706	1059
87-82	Right Front	B186-82; Dual	60M	9-0706	1059
87-82	Right Front	1860-70097;Dual	60M	9-0706	1059
87-82	Right Front	1860-70067;Dual	60M	9-0706	1059
87	Right Front	1860-70094	60M	9-0706	1059
87-82	Right Front	1860-70071	30M	9-0743	1078
87	Right Front	1860-70093	30M	9-0743	1078
95-91	Right Front (FC)	72650000	82M	9-0939	1075
95-91	Right Front Conv.	74400000	60M	9-0942	1084
95-91	Right Front Conv.	74400010	47M	9-0962	1084
80-66	Rear	B6412-72BF1	65M	9-0726	1011
80-66	Rear	B6412-78BF	65M	9-0726	1011
87	Rear	6600-70088.2 Fan	68M	9-0740	1005
86-85	Rear	6600-70080; 2 Fan		9-0801	1006
86-85	Rear	6600-70076. 2 Fan		9-0801	1006
87-83	Rear	6412-82BF		9-0738	1011
86-72	Rear	B6602-78BF	80M	9-0733	1006
87	Rear	6600-70086		9-0801	1006
87	Rear	6600-70068		9-0740	1005
97-91	Under seat, Wheelchair	71100000	26M	9-0949	1085
94-91	Under seat	82000020	39M	9-0948	1015
97-91	Under seat	64100020	60M	9-0943	1086
97-91	Under seat (2 Fan)	62850020	82M	9-0944	1087
97-94	Cadet Main Heater	74208000	90M		1112
95	Under seat	82000030	42M	82000030	1113

ONE STOP BUS STOP, INC.
1440 SOUTH LOOP 12
IRVING, TEXAS 75060

1-800-460-2877

CLIMATE CONTROL

HEATER CORES

THOMAS BUILT BUSES

YEAR	HEATER DESCRIPTION	MODEL	BTU'S	OEM NO.	ONE STOP PART NO.
81-74	Left Front	B440-70FBTD	97.6M	2605-8370	26058370
81-74	Left Front	B440-73FBTD	97.6M	2605-8370	26058370
81-74	Left Front	B440-77FBTD	97.6M	2605-8370	26058370
82	Left Front	B440-82-FBT		6600-0152	66000152
83	Left Front	B440-83-FBT		6600-0283	66000283
86	Left Front	4400-71072		6600-0203	66000203
94-92	Left Front, Vista				1111
88	Right Front	4400-710063	98M	6600-0284	1061
86	Right Front	1860-71095		6600-0288	1060
	Right Front	186T-80			1059
94-92	Right Front, Vista				1110
82-71	Rear	B63-22T-68; 2 Fan	65M	2606-8366	1011
82-71	Rear	B63-22T-72F	65M	2606-8366	1011
82-71	Rear	B63-12-65B	65M	2606-8366	1011
82-71	Rear	B63-22-65B	65M	2606-8366	1011
82-71	Rear	B63-12-68BF	65M	2606-8366	1011
82-71	Rear	B64-12-72BF	65M	2606-8366	1011
82-71	Rear	B64-12-78BF	65M	2606-8366	1011
86	Rear	6600-71076; 2 Fan		6600-0274	1005
83	Rear	86322T-80F; 2 Fan		6600-0091	1011
	Rear	2 Fan		6600-0286	1006

**HEATER CORES
FOR ALL
MAKES OF BUSES**

CLIMATE CONTROL

HEATER CORES

WARD/AMTRAN/GENESIS

YEAR	HEATER DESCRIPTION	MODEL	BTU'S	OEM NO.	ONE STOP PART NO.
92-72	Patriot (1 Fan Driver) Left Front	123-000	20M	413594002	1026
91(only)	Senator (1 Fan Driver)	72250000	19M	423678001	1066
92-72	Volunteer (c) (3 Blower)	WLF85	85M	413556000	1062
92-91	Senator (1 Fan Driver)	72250001 or 423921001	19M	82510200	1077
91-86	Volunteer (c) (1 Fan Blower) Rt. Front	WRF50	60M	413557000	1063
ALL	Gov. bus (Military)	27-220	32M	412204000	1025
92-87	President	414152000	85M		1028
92-83	Patriot (Main)	27-211	90M	413593002	1027
93-91	Senator (Navistar)	42-2653001	78M	423677001	1067
93-91	Senator (Crane) Under seat	42-3251001	78M	423677001	1067
81-68	Volunteer (2 Fan Wax 70}	WAX 70/8160-01	70M	92707100	92707100
85-82	All Models 2 Fans Reversible	8160	84M	413591002	1014
87-85	All Models 2 Fans Reversible	8160	84M	413591002	1014
91-82	All Models (1 Fan)	8200	40M	8201	1015
93-91	All Models (1 Fan)	82000020 or 423529001	40M	82010201	1068
97-87	All Models (2 Fan)	81600001 or 414745001	82M	8161	1076
97-93	All Models (1 Fan)	82000030	42M	82008003	1113
92-83	One Ton Van Guard				1015
97-95	Genesis (1 Fan Drive)	72250001 OR 423921001		82510200	1077

**GIVE US A CALL FOR ALL YOUR
CLIMATE CONTROL
NEEDS**

1-800-460-2877

CLIMATE CONTROL

HEATER CORES

WAYNE

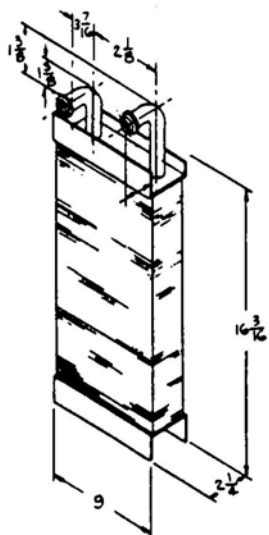
YEAR	HEATER DESCRIPTION	MODEL	BTU'S	NO.	PART NO.
88-72	Life Guard 2 Fan & Blower Lt. Front	66692-1	95M	66692-3	1016
90-87	Life Guard 2 Fan & Blower	69906-1	95M	69906-2	1016
90-87	Lifestar 2 Fan & Blower	69923-1	90M		1023
92-89	Life Guard 1 Fan & Blower	301118-001	95M		1079
92-89	Life Guard 2 Fan & Blower	301119-001	90M		1079
94-93	Life Guard 2 Fan & Blower	301655001	99M	66590141	1083
94-93	Life Guard 1 Fan & Blower	301743001	85M	66590141	1083
94-93	Lifestar Driver -Right Front-	301656001	20M	56110200	1095
90-86	Life Guard (1 Fan 5/16 Tube)	69907-1	35M	69907-2	1017
91-86	Life Guard (2 Fan)	67550-1*69908-1	50M	67550-3*69908-2	1018
85-73	Life Guard 2 Fan)	65340-1	50M	6534-2	1071
90-87	Lifestar (2 Fan)	69578-1	50M		1024
91	Lifestar (2 Fan)	58001	50M		Call
86-79	Life Guard (1 Fan)	65289-1	35M	65289-2	1070
90-87	Life Guard (KY) {1 Fan 318 Tube}	67551-2	35M	67551-4	1021
92-91	Life Guard 1 Fan)	301510-001	35M	FT200282	1089
92-91	Life Guard 2 Fan)	301509-001	50M	FT200281	1088
95-93	Life Guard 2 Fan)	301654001	51M	64910700	1114
95-93	Life Guard 1 Fan)	301691001	35M	64960400	1115
95-93	Lifestar -Under seat-	301690001	90M	65758000	1116
89-62	All Models (1 Fan)	69909-1; 62739-1	60M	69909-2; 62739-5	1020
88-70	All Models (2 Fan)	69910-1; 63020-1	80M	69910-2; 63020-2	1019
90-74	Minibus (1 Fan)	319354-1	35M	319654-2	1022
90-88	All Models (2 Fan)	300859-1	80M	300859-2	1064
90-88	All Models (1 Fan)	300858-1	60M	300858-2	1065
92-89	All Models (1 Fan)	301121-001	60M	FT200293	1090
92-89	All Models (2 Fan)	301120-001	80M	FT200251	1091
95-93	All Models	62850001	32M	62810700	1117
95-93	All Models	64100003	60M	62010700	1118
95-93	All Models {2 Fan Reverse Air}	301742001	85M	62810700	1117
95-93	Chaperone	65060000	32M	65068000	1082

IF THE HEATER CORE YOU NEED IS NOT LISTED GIVE US A CALL

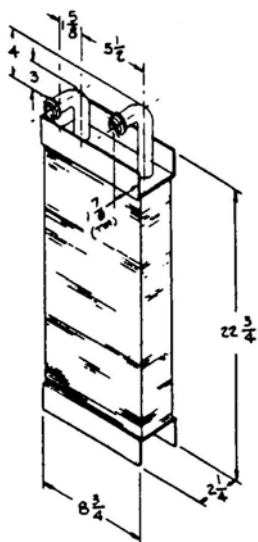
1-800-460-2877

CLIMATE CONTROL

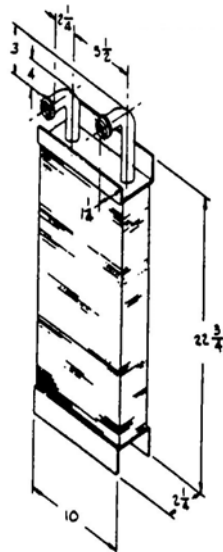
HEATER CORES



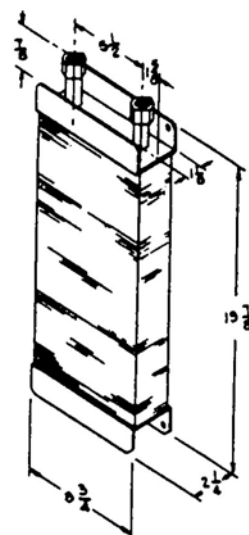
OSBS 1004
1" OD INLET & OUTLET



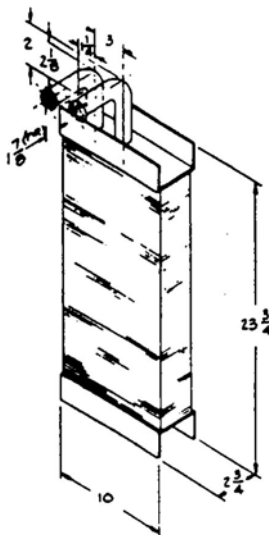
OSBS 1005
1" OD INLET & OUTLET



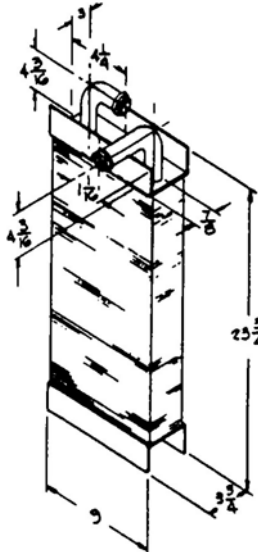
OSBS 1006
1" OD INLET & OUTLET



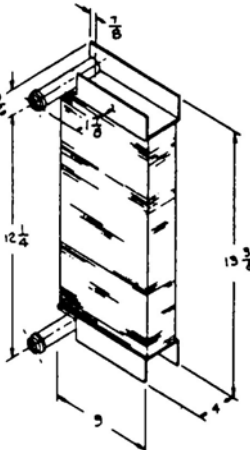
OSBS 1011
3/4" NPT INLET & OUTLET



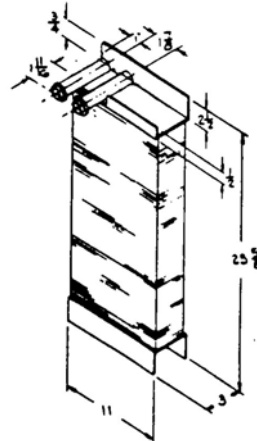
OSBS 1012
1" OD INLET & OUTLET



OSBS 1014
1" OD INLET & OUTLET



OSBS 1015
1" OD INLET & OUTLET

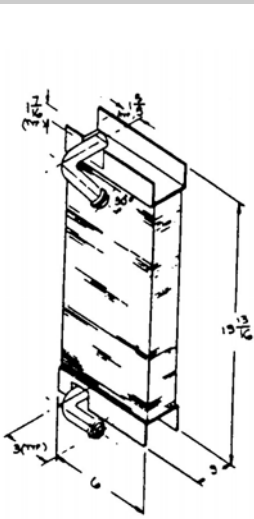


OSBS 1016
1" OD INLET & OUTLET

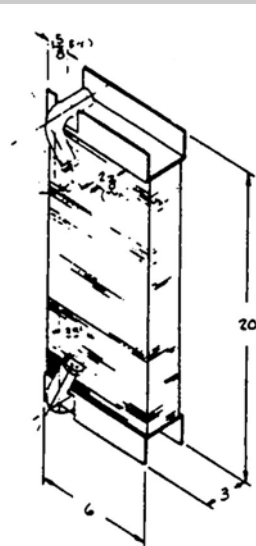
1-800-460-2877

CLIMATE CONTROL

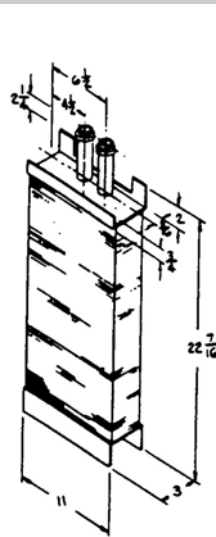
HEATER CORES



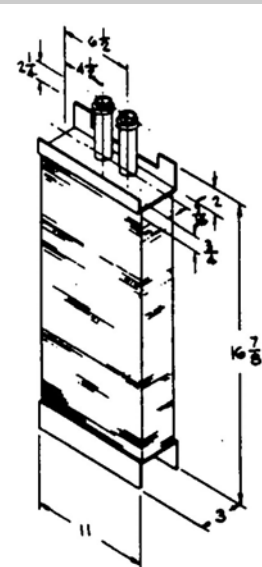
OSBS 1017
1" OD INLET & OUTLET



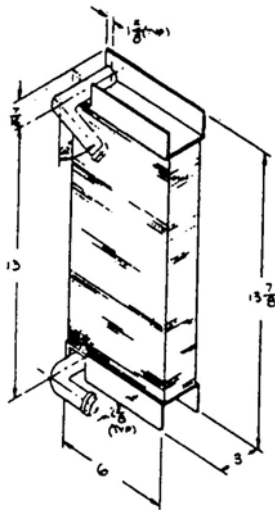
OSBS 1018
1" OD INLET & OUTLET



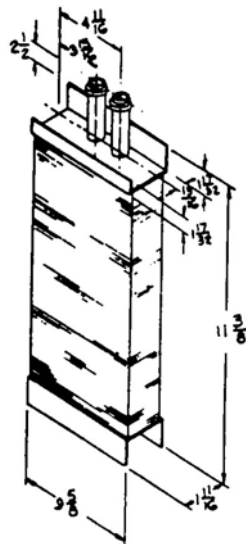
OSBS 1019
1" OD INLET & OUTLET



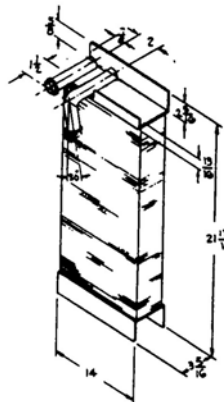
OSBS 1020
1" OD INLET & OUTLET



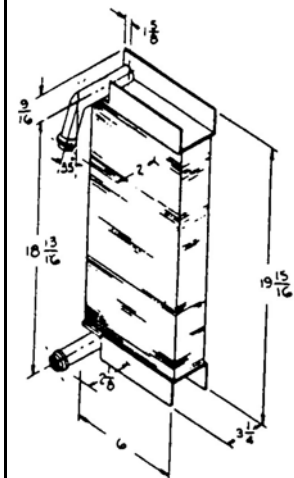
OSBS 1021
1" OD INLET & OUTLET



OSBS 1022
3/4" OD INLET & OUTLET



OSBS 1023
1" OD INLET & OUTLET



OSBS 1024
1" OD INLET & OUTLET

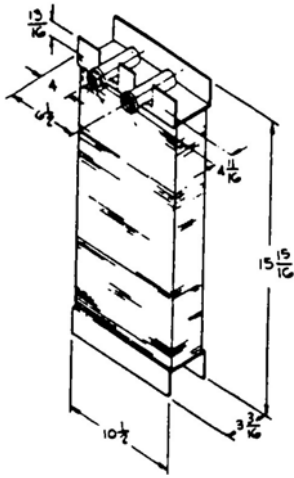
VISIT US AT

www.onestopbusstop.com

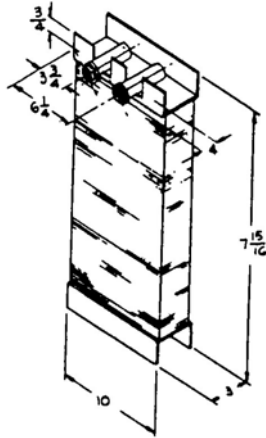
"Your School Transportation Parts Specialist"

CLIMATE CONTROL

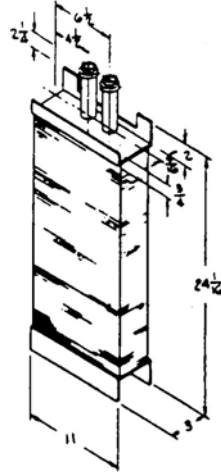
HEATER CORES



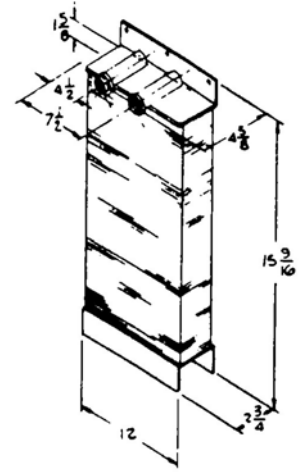
OSBS 1025
1" OD INLET & OUTLET



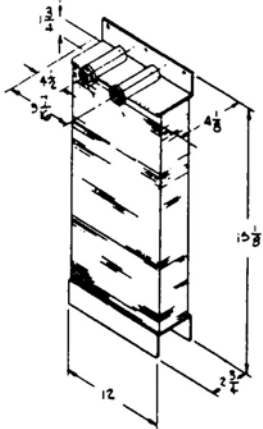
OSBS 1026
1" OD INLET & OUTLET



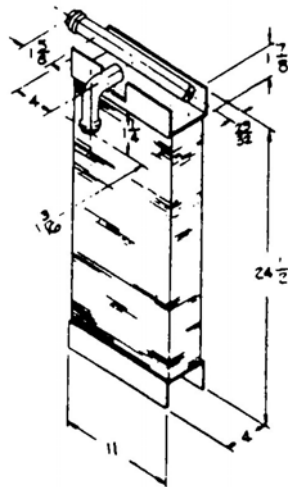
OSBS 1027
1" OD INLET & OUTLET



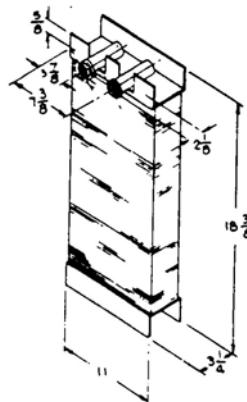
OSBS 1059
1" OD INLET & OUTLET



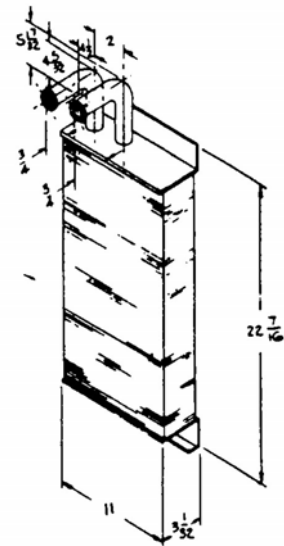
OSBS 1060
1" OD INLET & OUTLET



OSBS 1062
1" OD INLET & OUTLET



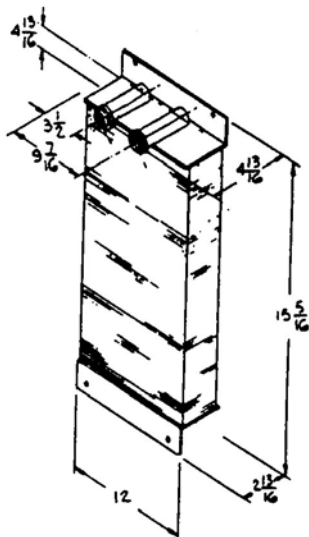
OSBS 1063
1" OD INLET & OUTLET



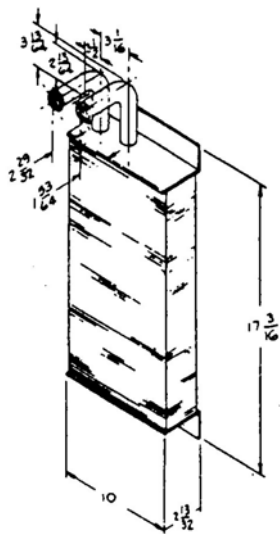
OSBS 1064
1" OD INLET & OUTLET

CLIMATE CONTROL

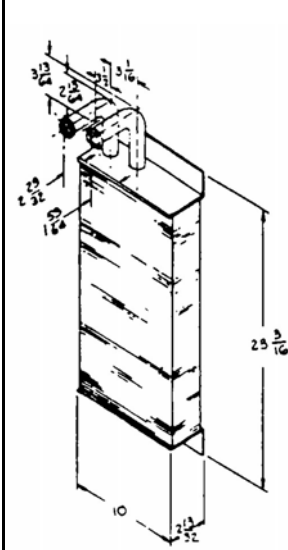
HEATER CORES



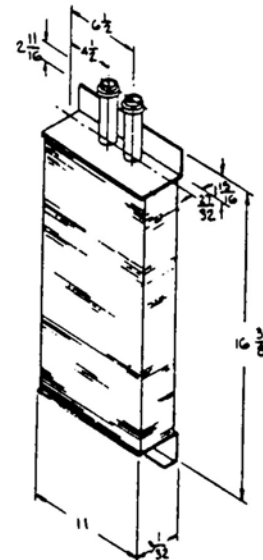
OSBS 1084
1" OD INLET & OUTLET



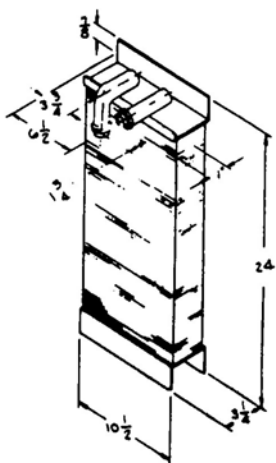
OSBS 1090
1" OD INLET & OUTLET



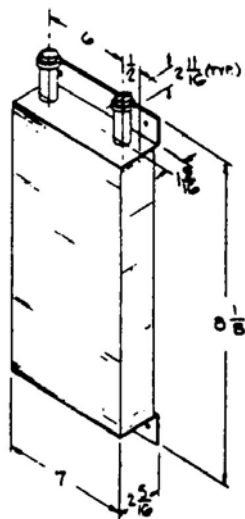
OSBS 1091
1" OD INLET & OUTLET



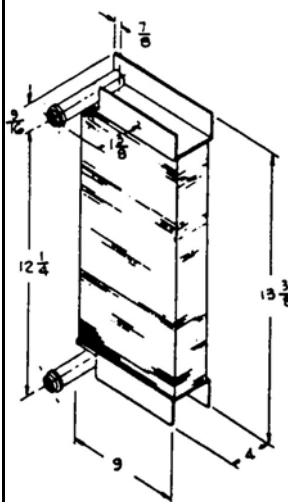
OSBS 1092
5/8" OD INLET & OUTLET



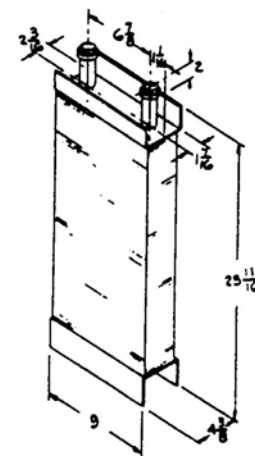
OSBS 1094
1" OD INLET & OUTLET



OSBS 1095
5/8" OD INLET & OUTLET



OSBS 1096
1" OD INLET & OUTLET



OSBS 1097
5/8" OD INLET & OUTLET

CLIMATE CONTROL

HEATER RELATED ITEMS



952887
GROCO BOOSTER PUMP
17 GPM 1" INLET AND OUTLET
BRONZE PUMP HEAD



61230211
BERGSTROM BOOSTER PUMP
1" INLET AND OUTLET
PLASTIC PUMP HEAD
6600-0784
WITH 90 DEGREE ELBOW



9-04640S
HEATER
CONTROL
VALVE

4297222
GROCO BOOSTER PUMP
BRONZE PUMP HEAD
WAYNE STYLE 1/2" NPT

HEATER CONTROL
CABLES AVAILABLE

CALL WITH
YEAR
MAKE
MODEL
BODY SERIAL NUMBER
OR
PARTS ORDER NUMBER



9-0464 FITS THOMAS AND
CARPENTER
HEATER CONTROL
VALVE
651844 BLUE BIRD HEATER
CONTROL VALVE
2604-1375 3/4" GATE VALVE
FOR 1" HEATER HOSE



1" SPLICES AND
ELBOWS
13010121 STRAIGHT
13050122 90 DEGREE

1-800-460-2877

CLIMATE CONTROL

AIR CONDITIONING MOUNT AND DRIVE KITS



MOUNT AND DRIVE KITS

PART NUMBER	DESCRIPTION	COMPRESSOR
1296-065-124	6.5 GM 124 AMP ALT	10 CU. IN. (1)
1296-350-124	5.7 GM 124 AMP ALT	10 CU. IN. (1)
3014	DT-DTA 360/466 V GRV	10 CU. IN. (1)
3016	DT 408-466 V BELT	10 CU. IN. (1)
3019	DT 408-466 V BELT	10 CU. IN. (1)
3030	7.3 DUAL COMP.	10 CU. IN. (2)
3034	T444E DUAL COMP.	10 CU. IN. (2)
3234	T444E DUAL COMP.	12 CU. IN. (2)

OTHER MOUNT KITS ARE AVAILABLE CALL WITH YOUR CHASSIS INFORMATION FOR DETAILS

AIR CONDITIONING COMPRESSORS



A6 COMPRESSOR



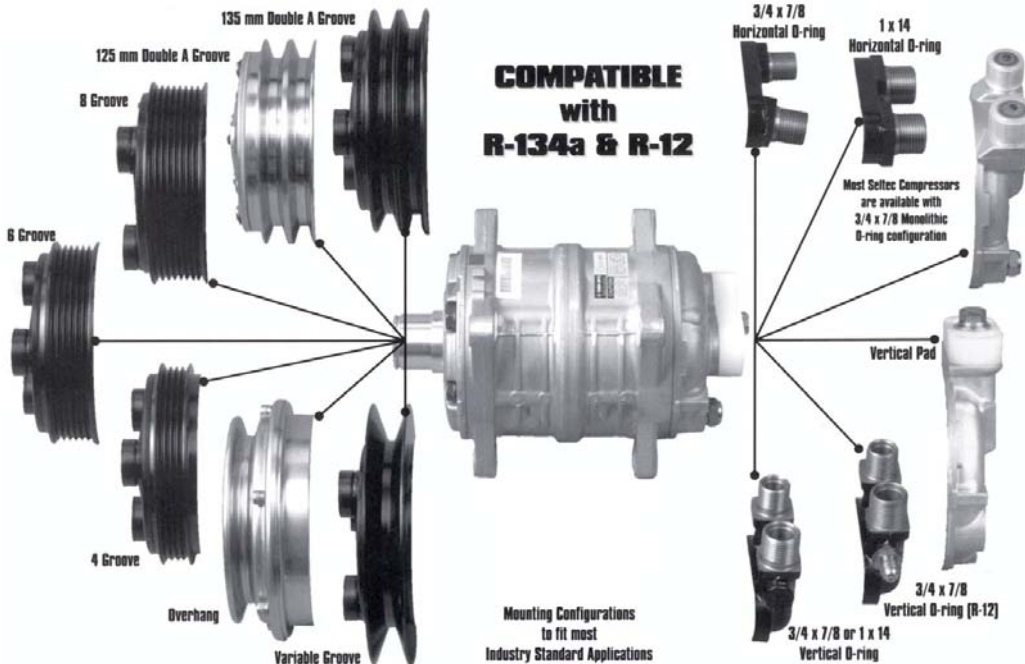
SANDEN



SELTEC



UNICLA



TO ORDER COMPRESSORS PLEASE HAVE A COMPLETE DESCRIPTION OF YOUR COMPRESSOR OR THE MODEL NUMBER OFF OF THE DATA TAG LOCATED ON THE BODY OF THE COMPRESSOR

1-800-460-2877

CLIMATE CONTROL

CONDENSERS



OMEGA 24-30105

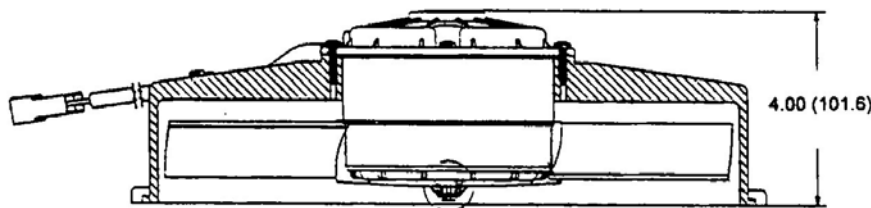
WE STOCK REPLACEMENT PARTS FOR ALL BRANDS OF A/C SYSTEMS INCLUDING A COMPLETE LINE OF NEW A/C SYSTEMS FOR SCHOOL BUSES

OMEGA 24-41526



OMEGA, ACC & AMFAB STYLE HEAVY DUTY SLAB STYLE CONDENSER

OMEGA, RIFLED AIR, A/C INDUSTRIES & TRANS AIR STYLE 3 FAN CONDENSER ASSY

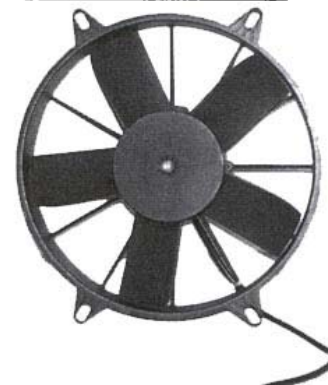


28-0003



44-005

MOUNTING BRACKET FOR 25-14 SERIES FAN



25-11112 11" PUSHER NEW STYLE A/C INDUSTRIES

CONDENSER FANS

- 25-14762 11" PULLER HD
- 25-14825 10" PUSHER
- 25-14813 10" PULLER
- 25-14802 11" PULLER
- 25-14831 14" PULLER
- 25-14807 16" PULLER
- 25-14807HP 16" PULLER HD
- 25-14808 9" PULLER
- 25-14829 12" PUSHER
- 25-14854 14" PULLER HD REV.
- 25-14883 8" PUSHER



37-10865 FILTER DRIER FITS A/C INDUSTRIES & RIFLED AIR



37-10860 FILTER DRIER

FITS ACC, AMFAB, OMEGA & TRANS AIR

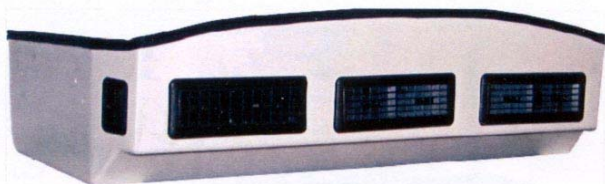


37-10860A SIGHT GLASS FITS ALL

1-800-460-2877

CLIMATE CONTROL

EVAPORATORS

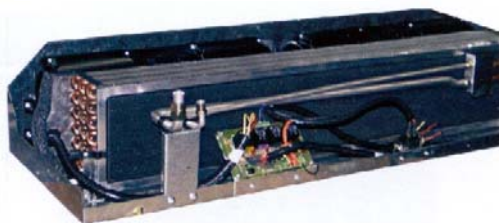


REAR MOUNT EVAPORATOR



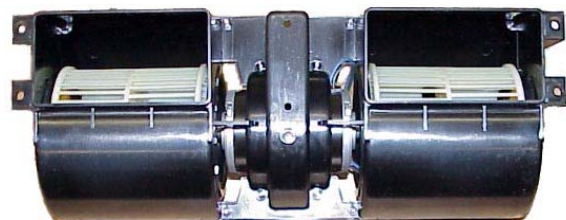
**SIDE MOUNTED EVAPORATOR
EVAPORATOR ASSEMBLY**

**WE STOCK A COMPLETE LINE OF
REPLACEMENT PARTS FOR ALL
BRANDS OF A/C SYSTEMS**



**37-10860
FILTER DRIER**

FITS ACC, AMFAB, OMEGA & TRANS AIR



**26-19912 BLOWER ASSEMBLY
FITS ALL**

REPLACEMENT PARTS AVAILABLE

28-94111 BLOWER HOUSING KIT
COMES WITH HOUSING AND
BLOWER WHEELS

26-14522 DUAL SHAFT BLOWER MOTOR



**31-30901
31-30927
210031**



EXPANSION VALVES

BLOCK TYPE* *NOT TRANS AIR
BLOCK TYPE** **TRANS AIR ONLY
3 LINE EXT EQUAL**



**RELAY BOARD ASSEMBLY
33-13653**



**48-001 BLOWER SPEED
48-002 TEMP CONTROL**



**37-10865 FILTER DRIER
FITS A/C INDUSTRIES AND RIFLED AIR**

**NEW STYLE
A/C MICROPROCESSOR
CONTROL
SYSTEM
RETROFIT KIT IS AVAILABLE
CALL FOR DETAILS**



**33-13669 MEMBRANE
SWITCH KIT**

CLIMATE CONTROL

FITTINGS, O-RINGS AND HOSE



35-S1326-3
HIGH SIDE COMPRESSOR
DISCHARGE SIDE OF COMP



35-S1327-3
LOW SIDE COMPRESSOR
SUCTION SIDE OF COMP



35-S1326
#10 HIGH SIDE CONDENSER
ATTACHED AT CONDENSER COIL

CALL US
IF YOU
DO NOT SEE
THE
FITTING
YOU NEED

1-800-460-2877



35-S1122
LIQUID LINE CONDENSER
ATTACHED AT FILTER



35-S1302
LIQUID LINE EVAPORATOR
SMALL LINE AT EVAPORATOR



35-S1307
LOW SIDE EVAPORATOR
LARGE LINE AT EVAPORATOR



	SPLICES FITTING	HOSE
35-B6103	10	10
35-B6102	8	8
35-B6104	12	12
35-B6107	10	12

FOR STEEL FITTINGS USE AN S IN PLACE OF THE B
W/R134A PORT

35-36450	10	10 HIGH
35-B6104-3	12	12 LOW
35-B6102-3	8	8 HIGH

FOR STEEL FITTINGS USE AN S IN PLACE OF THE B
W/R12 PORT

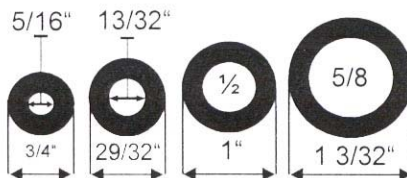
35-S6102-1	1/2"	8
35-S6103-1	5/8"	10
35-S6104-1	3/4"	12

FOR STEEL FITTINGS USE AN S IN PLACE OF THE B

**PRESSURE
SWITCHES**
40-03501
40-03502
CALL FOR
YOUR
CORRECT
NUMBER

O RINGS
#6 O RING
#8 O RING
#10 O RING
#12 O RING

A/C HOSE SIZES



HOSE
#6 5/16 A/C HOSE
#8 13/32 A/C HOSE
#10 1/2 A/C HOSE
#12 5/8 A/C HOSE

ORDER BY THE FOOT